

# T13 REV

Per escavatori 8.0-16.0 ton / For excavators 8.0-16.0 ton

TRINCIATRICI IDRAULICHE  
HYDRAULIC MULCHERS



T13 MZ105 REV	
T13 MZ130 REV	



**HF6**  
Ø max 8 cm

di serie  
standard equipment

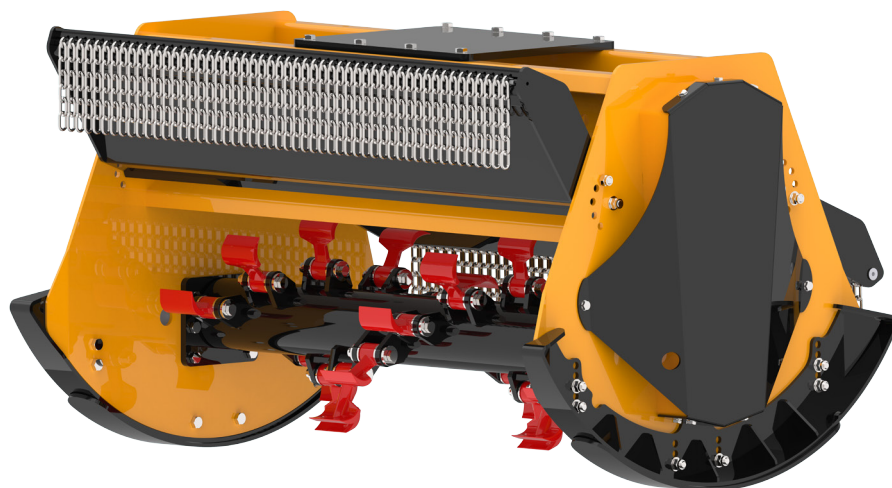


**KF7**  
Ø max 6 cm

T13 FR105 REV	
T13 FR130 REV	



**HF8 (FR105)**  
**HF9 (FR130)**  
Ø max 12 cm



T13 DF105 REV	
T13 DF130 REV	



**HF14**  
Ø max 25 cm

di serie  
standard equipment



**HF15**  
Ø max 20 cm

MZ











FR



DF



Modello Model	 (ton)	 (cm)	 (LxAxH cm)	 Kg	Cilindrata motore Motor displacement	 (L/min)	 bar (min-max)		Rotore Rotor	
T13 MZ105 REV	8.0-16.0	105	125x95x85	480	34-44-51	70-80 90	200-220	1 (50 mm)	elicoidale helical	16
T13 MZ130 REV	8.0-16.0	130	145x95x85	540	34-44-51	70-80 90	200-220	1 (50 mm)	elicoidale helical	20
T13 FR105 REV	8.0-16.0	105	125x95x85	535	34-44-51	70-80 90	200-220	1 (50 mm)	4 file 4 lines	22
T13 FR130 REV	8.0-16.0	130	145x95x85	595	34-44-51	70-80 90	200-220	1 (50 mm)	4 file 4 lines	26
T13 DF105 REV	10.0-16.0	105	125x95x85	685	44-51	80-90	200-220	1 (50 mm)	elicoidale helical	30
T13 DF130 REV	10.0-16.0	130	145x95x85	745	44-51	80-90	200-220	1 (50 mm)	elicoidale helical	36

#### CARATTERISTICHE TECNICHE E DOTAZIONI STANDARD

- MZ Rotore elicoidale con mazze bonificate e coltelli intercambiabili.
- FR Rotore forestale con mazze a scomparsa.
- DF Rotore forestale a denti fissi.
- Trasmissione monocinghia dentata preallungata HTD ad alte prestazioni.
- Cofanatura interna a doppia cassa con intercapedine.
- Protezione carter cinghie.
- Trinciatrice simmetrica per un taglio più veloce con la rotazione dell'escavatore.
- Bocche d'ingresso e d'uscita completamente identiche.
- Cofani regolabili, apribili completamente per una maggiore capacità di taglio.
- Slitte d'appoggio regolabili su 3 posizioni per variare l'altezza di taglio.
- Supporti rotore interni con labirinto per la protezione dei cuscinetti dalle impurità.
- Cuscinetti rotore a doppia corona di sfere orientabili di prima qualità.
- Blocco valvole comprensivo di valvola prioritaria per regolazione della portata olio, antiurto (valvola di max pressione), anti-cavitazione.
- Motore ad ingranaggi in ghisa.
- Protezioni antinfortunistiche con catene a norma CE.

#### TECHNICAL FEATURES AND STANDARD EQUIPMENT

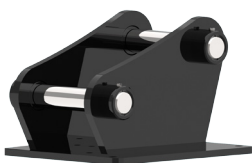
- MZ Helicoidal Rotor with hammers austempered and cutting blade interchangeable.
- FR Forestal flanged rotor with 360° rotating hammer.
- DF Forestal rotor fixed teeth.
- Toothed high-performance belts transmission.
- Internally reinforced double-case body with interspace.
- Protective belts cover.
- Symmetric shearing head, for faster cut with the rotation of the excavator.
- Input and output mouths completely identical, adjustable
- Adjustable hoods, fully openable for higher cutting capacity.
- Side skids adjustable on 3 positions to change the height of the cut.
- Inside Rotor Supports with "labyrinth" for the protection of the bearings from the impurities.
- Double Row spherical adjustable bearings of 1st quality.
- Valves block complete with priority valve for adjusting oil flow, anti-shock valve (pressure relief valve), anti-cavitation.
- Cast iron gear motor.
- Accident prevention chains protections according to EC directives.

#### ACCESSORI

- 1 - Attacco sella a perni 8.1-12.0 ton.
- 1 - Attacco sella a perni 12.1-16.0 ton.
- 2 - Kit tubi Lg. 2.5 metri.
- 2 - Kit tubi Lg. 2.5 metri per motore a pistoni.
- 3 - Rullo di appoggio.
- 4 - Supporto autolivellante (+60kg).
- 5 - Motore a pistoni (no blocco valvole).
- 6 - Blocco valvole 1" per motore a pistoni.
- 7 - Ralla girevole idraulica (senza autolivellante).
- 8 - Detrazione blocco valvole, solo anticavitazione.

#### ACCESSORIES

- 1 - Mounting hitch & pins 8.1-12.0 ton.
- 1 - Mounting hitch & pins 12.1-16.0 ton.
- 2 - Hoses kit Lg. 2.5 meters.
- 2 - Hoses kit Lg. 2.5 meters for piston motor.
- 3 - Feeler roller.
- 4 - Self-levelling support (+60kg).
- 5 - Piston motor (no block valves).
- 6 - Block valves 1" for piston motor.
- 7 - Hydraulic rotation device (not self-levelling support).
- 8 - Valves block deduction, only anticavitation.



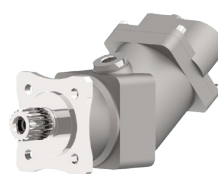
1



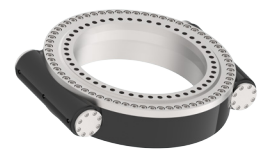
3



4



5



7